



Nature-Inclusive Design

WEBINAR

NID4BirdLIFE

*Nature-Inclusive Design solution to support
the Black-legged Kittiwake in Belgium*

Renewables
Grid Initiative



20 May 2025

11:30 – 12:45 CEST



NID4BirdLIFE

1

Technical aspects

Mute yourself

Rename yourself to
'Name, Organisation'

2

Questions?

Write your questions to
speakers in the chat

3

Recording

This webinar is recorded
and will appear on the
RGI YouTube channel

Housekeeping

Our speakers



Manon Thiel

Manager Energy & Nature

Renewables Grid Initiative



Riet Durinck

Offshore Community
Relations Officer

Elia



Robin Brabant

Marine biologist

RBINS

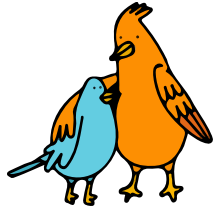


Robin Daelemans

Researcher

INBO

ABOUT RGI



We engage in an energy transition ecosystem of actors and promote **fair, transparent, sustainable grid development** to enable the growth of renewables to achieve full decarbonisation in line with the Paris Agreement.

TRANSMISSION SYSTEM OPERATORS (TSOS)



Renewables
Grid Initiative

NON-GOVERNMENTAL ORGANISATIONS (NGOS)



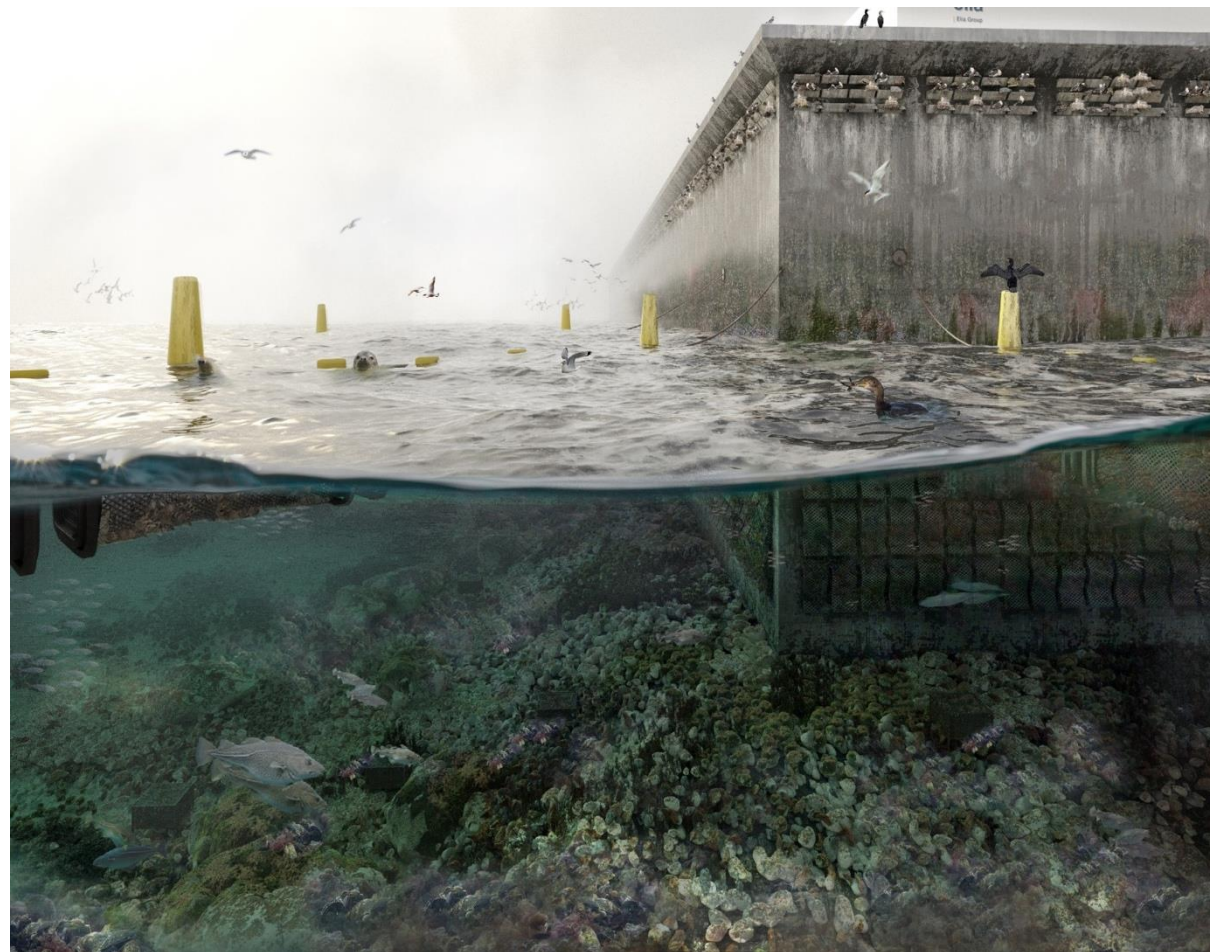
SUPPORTING MEMBERS



Renewables
Grid Initiative

NID4BirdLIFE

- 6,5 years initiative co-financed by the LIFE Programme (2023 – 2030)
- Project aims to support the Black-legged Kitiwake in Belgium
- This will be achieved through the integration of Nature-Inclusive Design (NID) elements into the island's wave walls.
- 4 project partners: Elia, RBINS, INBO and RGI





Timeline of NID4BirdLIFE

2024 -
2026

Onshore building of the caissons, incorporating parts of the NID-elements

2025 -
2026

Offshore installation of parts of the NID-elements

From
2027

Monitoring

Princess Elisabeth Island

Riet Durinck

Elia



Bird radar research

Robin Brabant

RBINS



NID4BirdLIFE

Camera monitoring

Robin Daelemans

INBO





NID4BirdLIFE

Merci.