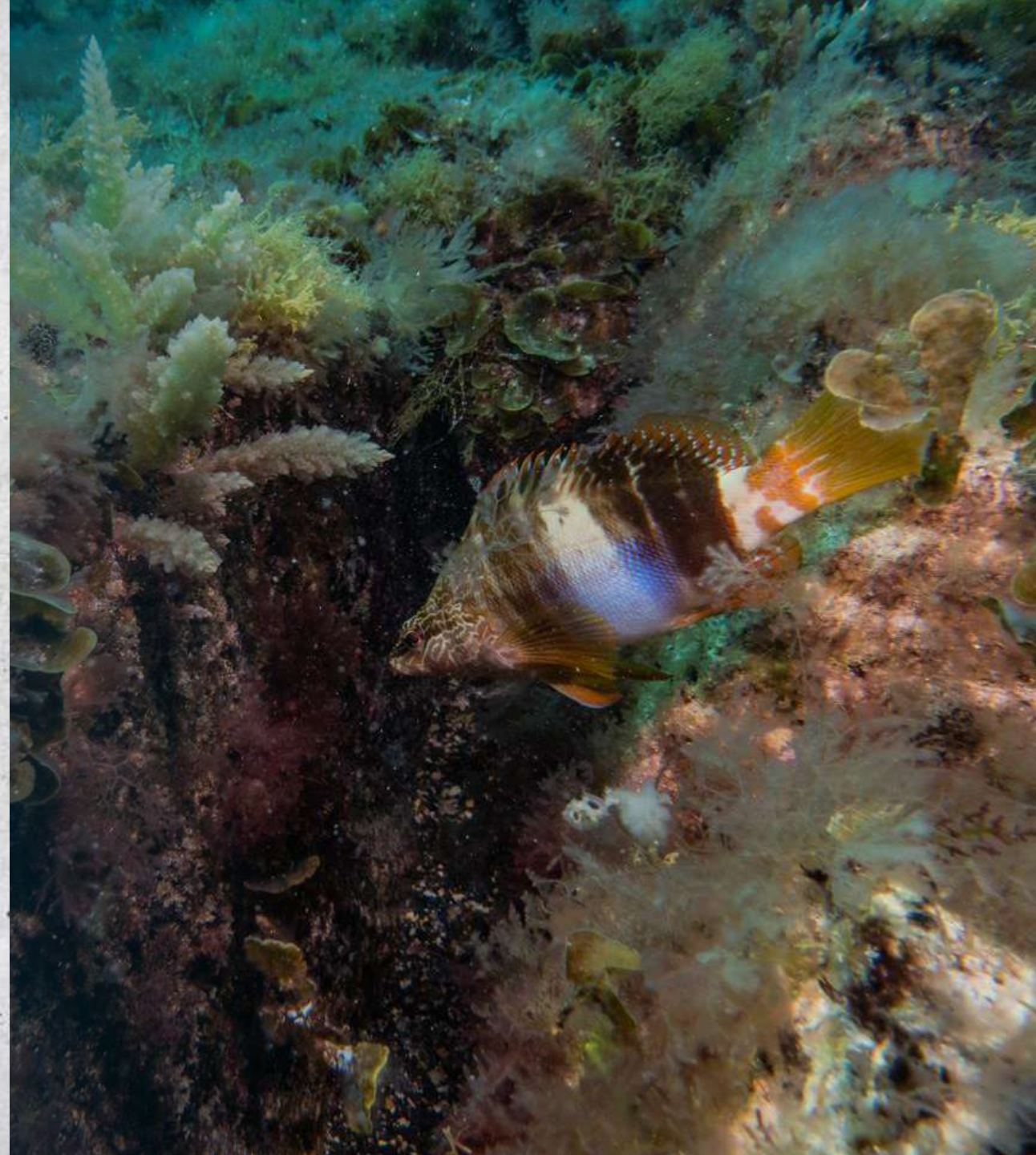




Nature-Inclusive Design Solutions

RGI Webinar / Mapping NID Solutions'
February 13, 2025



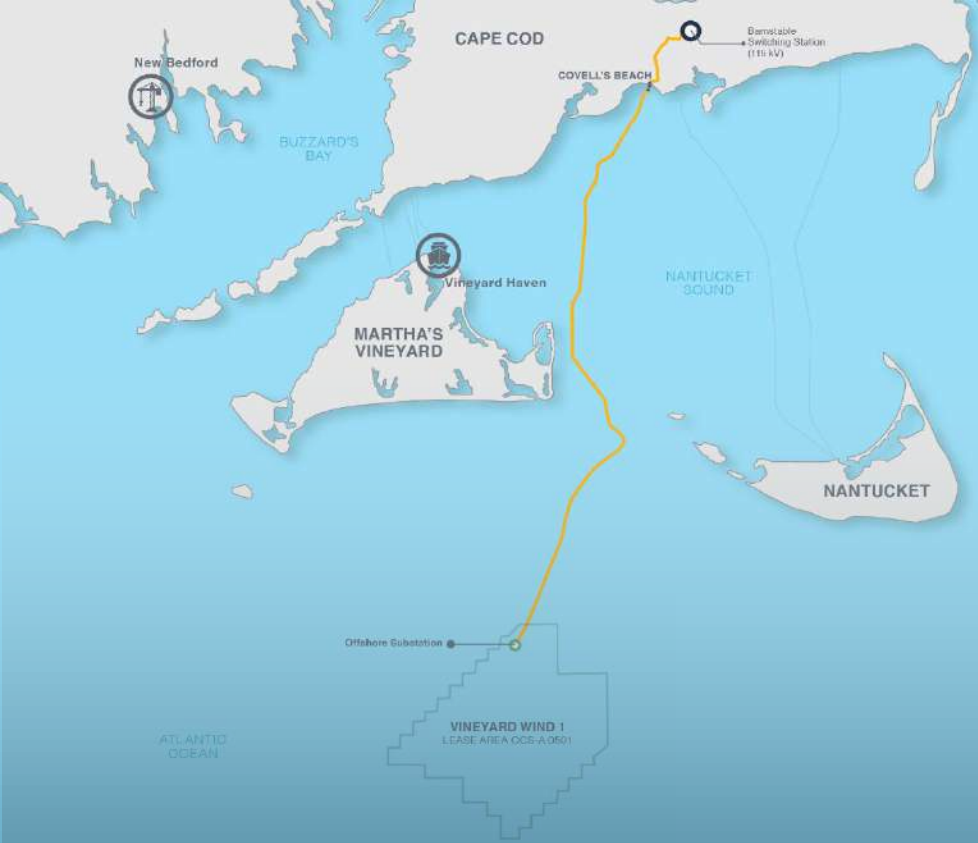


- ✓ Cable protection
- ✓ Habitat restoration


📍 Subsea Cable Protection
Fuerteventura – Lanzarote, Spain

red eléctrica





- ✓ Nature-inclusive cable protection
- ✓ Marine habitat creation

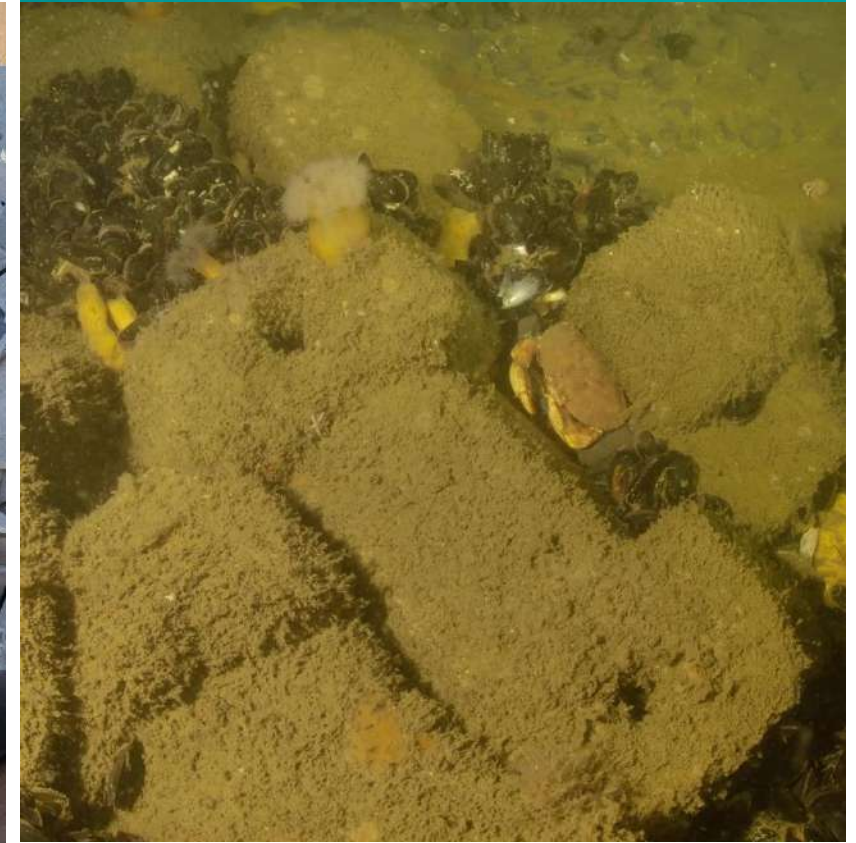
 Vineyard Wind Cable Protection
Martha's Vineyard, MA, USA



Eco-Engineered Scour Protection

Pilot Project - Analysis of biological enhancement, production and offshore placement

📍 Long Island, NY | 12 miles offshore



BIO-ENHANCING CONCRETE TECHNOLOGY

CONCRETE ADMIX

Enhances biological recruitment

SURFACE AGENTS

Supports marine life settlement

NATURE-INCLUSIVE DESIGN

Facilitates growth and survival

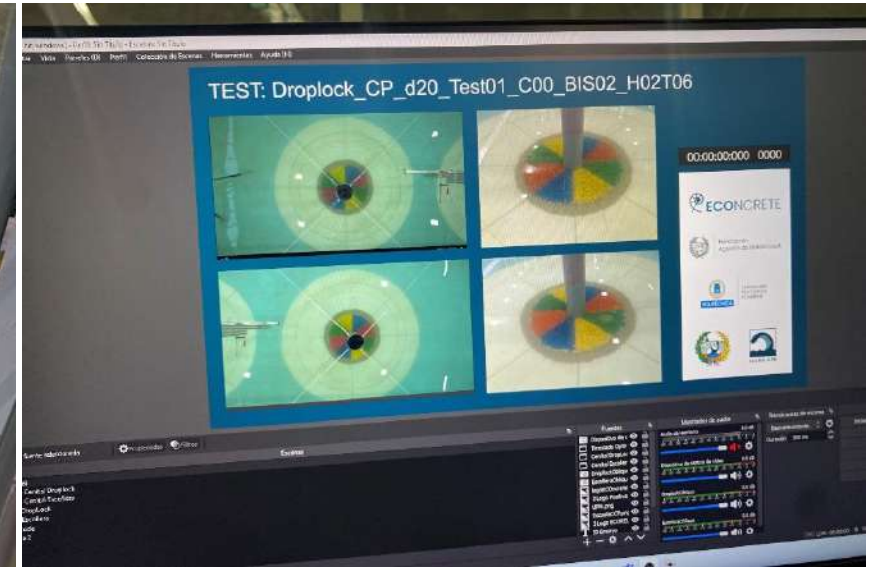
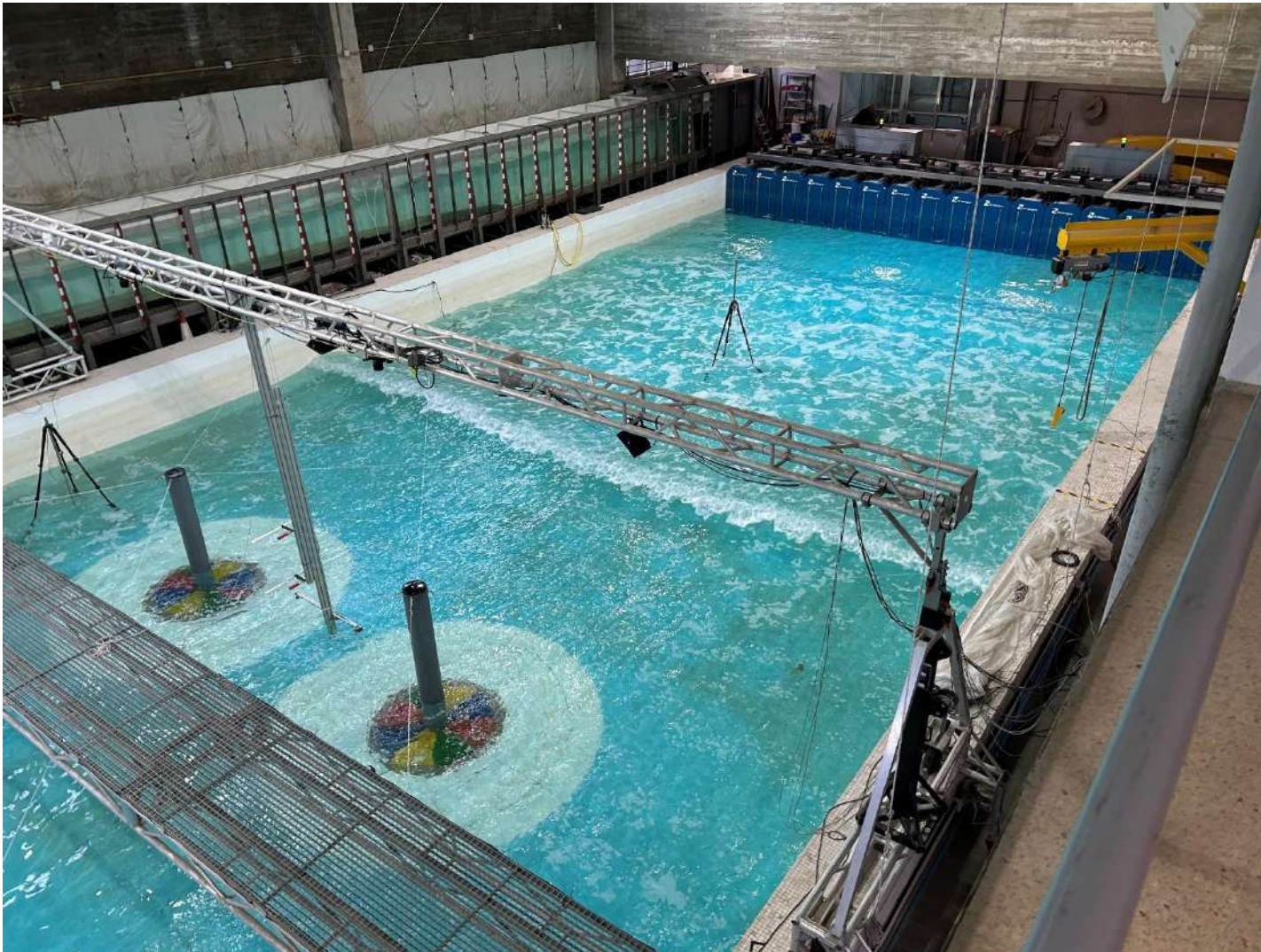
*Compatible with low carbon cement concrete mix design

ECONcrete proprietary and confidential

Validation - Ecological performance



Validation - Physical model testing

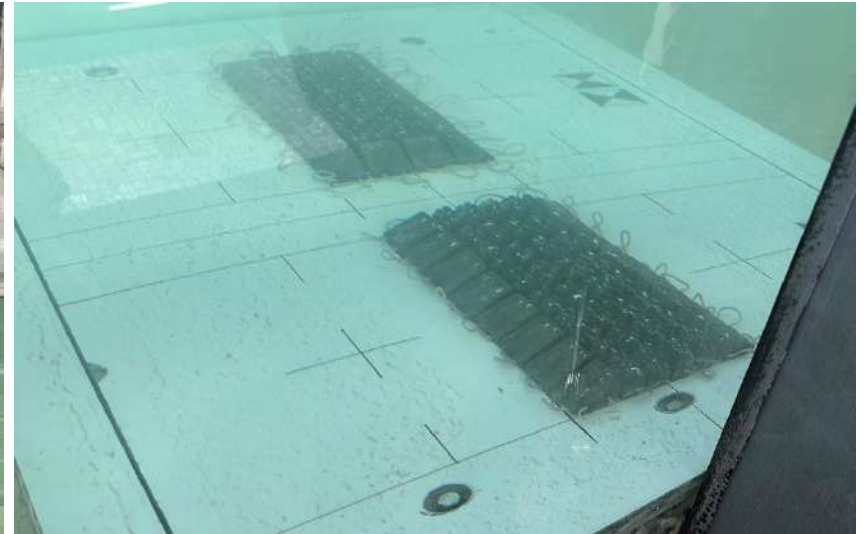


- 3D physical model tests to define hydraulic stability parameters for optimization, validation, and future specification



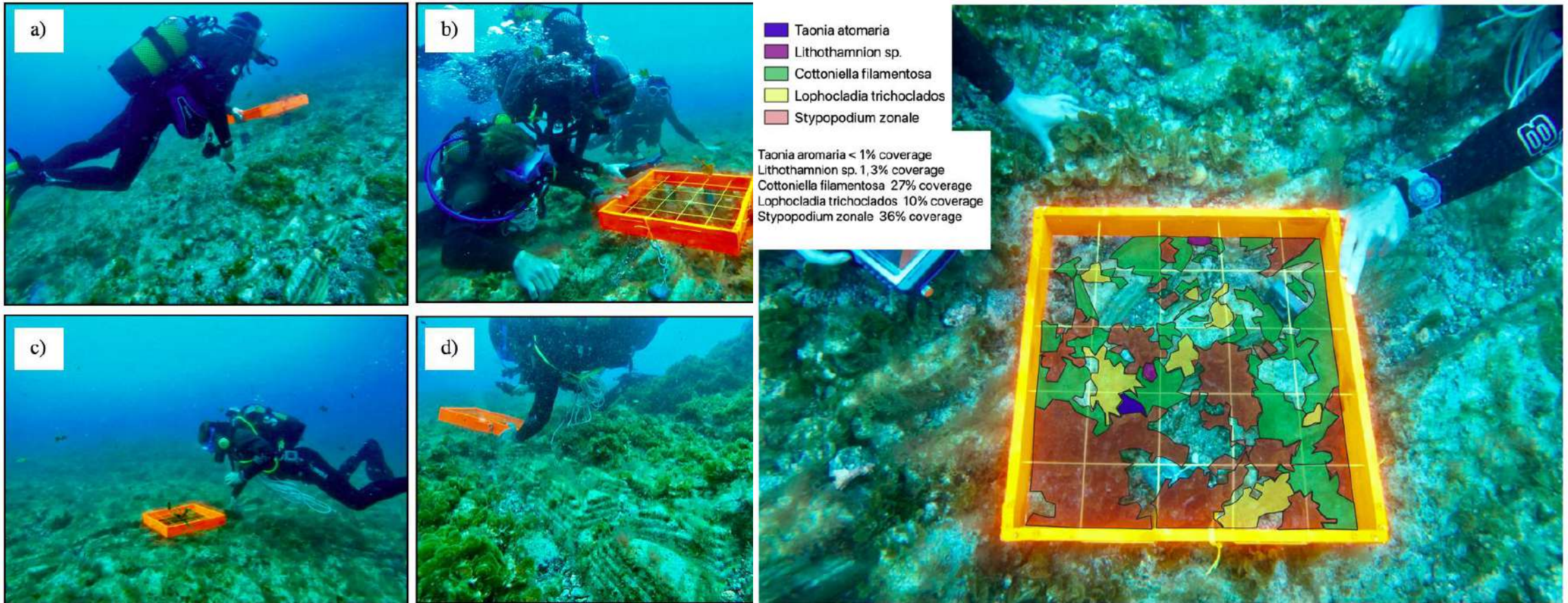
Monitoring 1-year post installation October 2024,

Validation / Physical Model Testing



Nature Inclusive Cable Protection

Monitoring 21 MPD (March 2024)



Photographs depicting the working methodology of quadrats. Images a), b), and d) were taken on the EConcrete® blocks (Zone A). Image c) was taken in Zone B (Control).

Classification and analysis of the percentage of algal coverage in a quadrat conducted on the EConcrete® blocks in section 2 (Zone A - T2, #02).