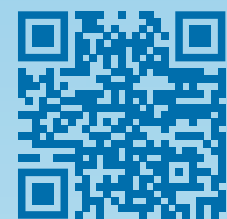


NATURE INCLUSIVE DESIGN

OPTIONS FOR OFFSHORE WIND FARMS & GRID INFRASTRUCTURE

For this infographic Nature-Inclusive Design (NID) is taken to cover modifications and/or additions to the design of offshore wind turbines and grid infrastructure that aim to enhance, either directly or indirectly, biodiversity and ecological functioning, such as nature-friendly scour protection layer, cable protection layer, and add-ons.

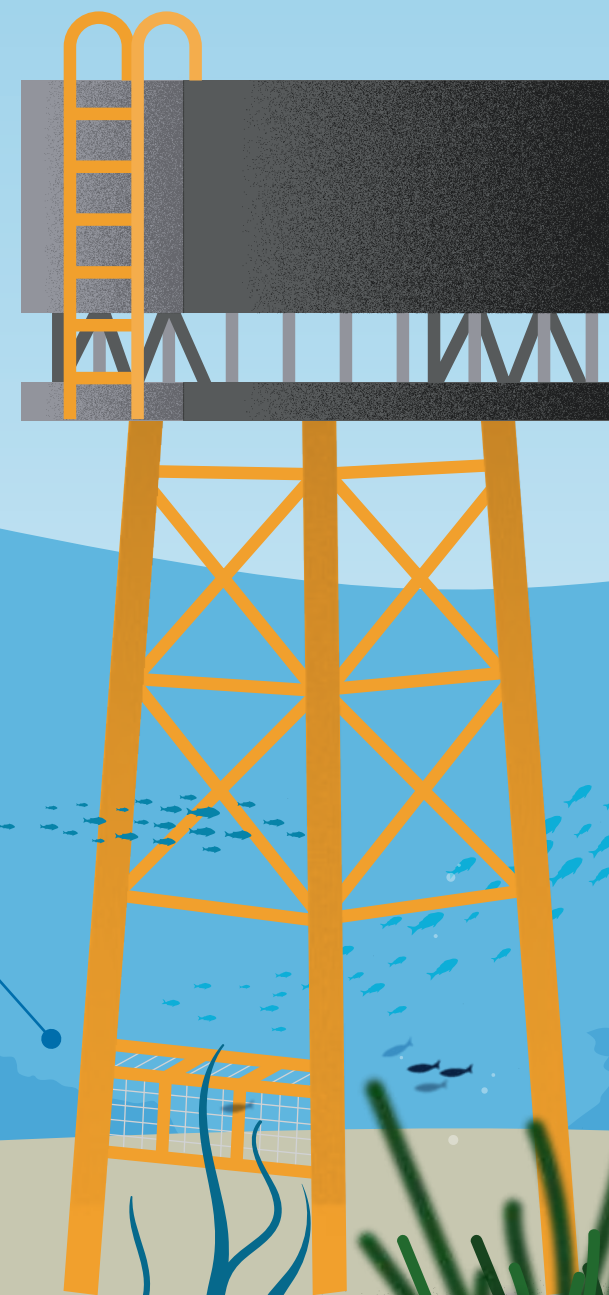
The measures included have been, or are currently being, developed and tested. They represent possible options and are not intended to be comprehensive. Their application should be considered on a project-by-project and site-specific basis and accompanied by appropriate ecosystem monitoring to understand their effects on biodiversity. The inclusion of specific measures doesn't constitute or imply endorsement.



Further information on NID measures can be found in the OCEaN Energy & Nature Database

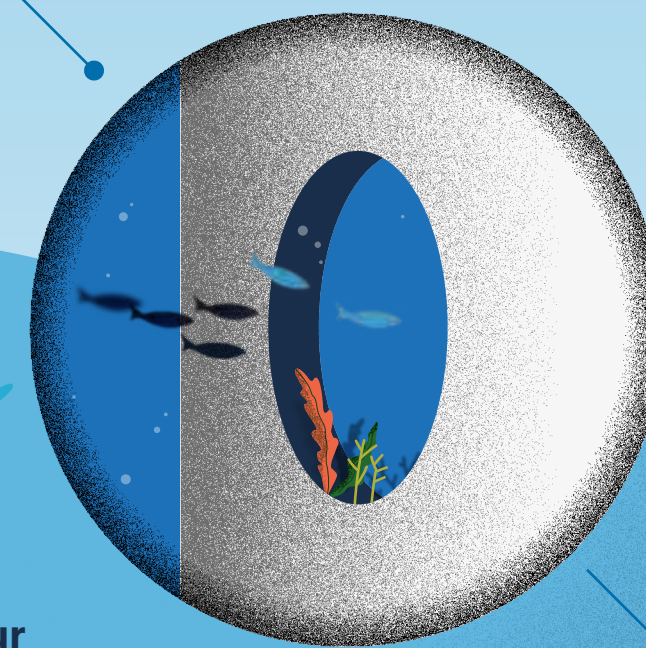


Fish hotels shelter young fish and protect them from predators



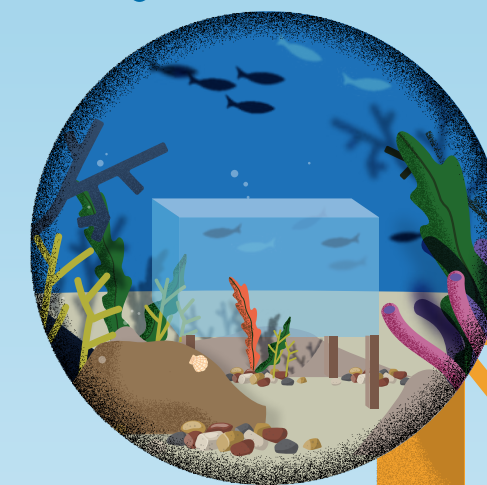
Artificial reefs create habitat within offshore wind farms

Water replenishment holes provide shelter for marine wildlife

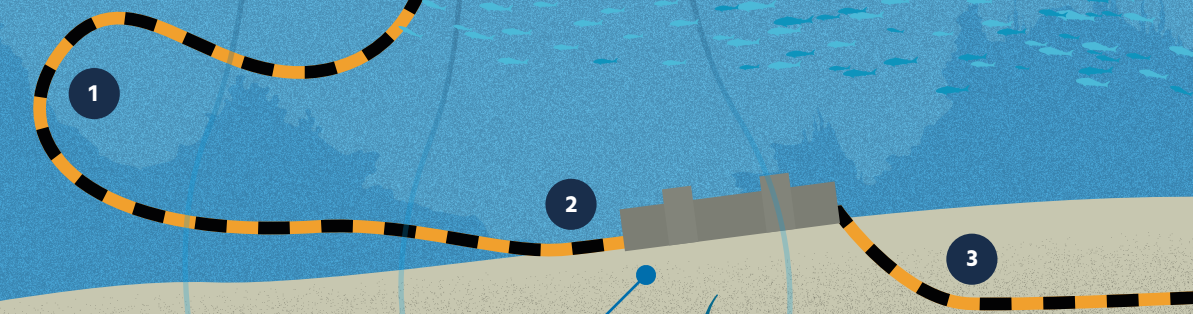
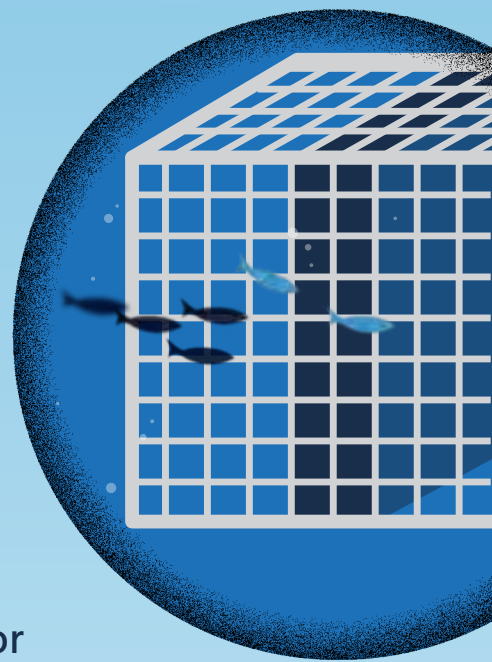


Nature-friendly scour protection prevents erosion and mimics natural habitat

Protective enclosures facilitate establishment of reef-building species (e.g., oysters, mussels, ross worm)



Biohuts provide food and shelter for young fish



Bio-rock/Sea-concrete protects cables and mimics natural habitat

Cables
1 Dynamic
2 Laid down
3 Buried